



**SPECIFICATIONS**

LOA	21'	6.4 m
LWL	20'-10"	6.35 m
BOA	12'-5"	3.8 m
Sail Area (racing ; main jib)	211 ; 97 ft <sup>2</sup>	19.6 ; 9 m <sup>2</sup>
Weight	880 lbs.	400 kg
Displacement	1588 lbs.	720 kg
Draft (board down)	8 (39)"	.19 (1) m
Material	Plywood, fiberglass, epoxy	

**TABLE OF CONTENTS**

Specifications ..... 1

Description ..... 2

**Building Method:** ..... 3

Labor ..... 5

More ..... 5

    License ..... 5

    Building Standards ..... 5

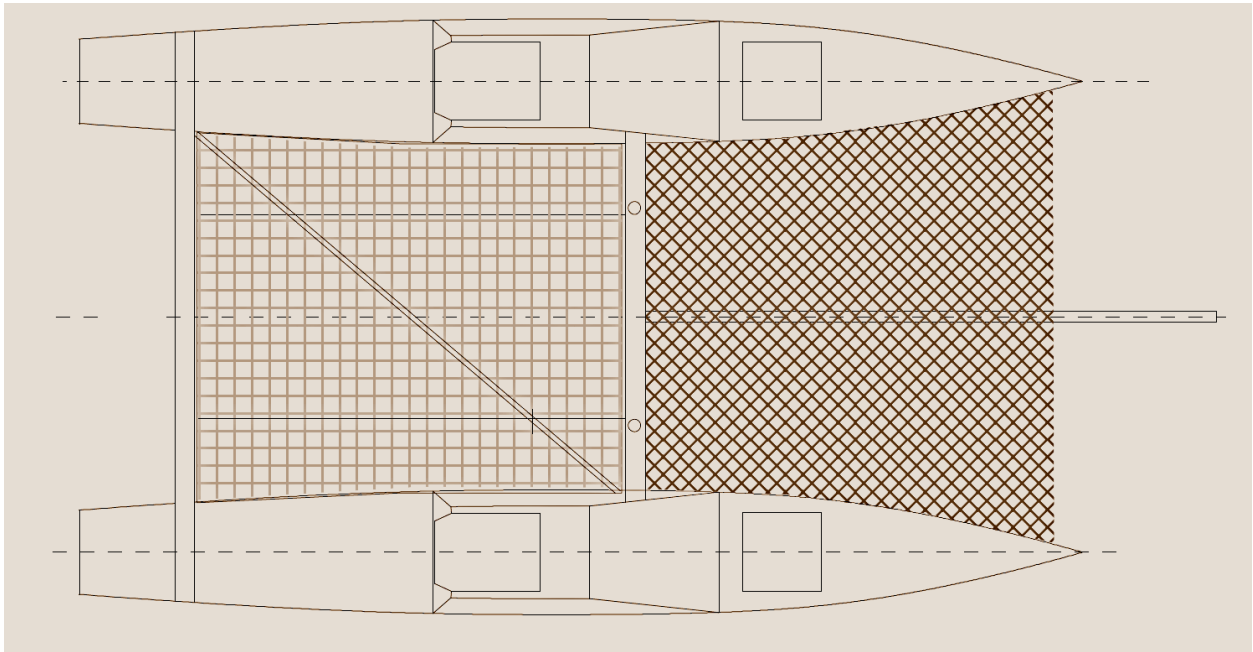
Bill of Materials ..... 6

Plans Packing List ..... 7

## DESCRIPTION

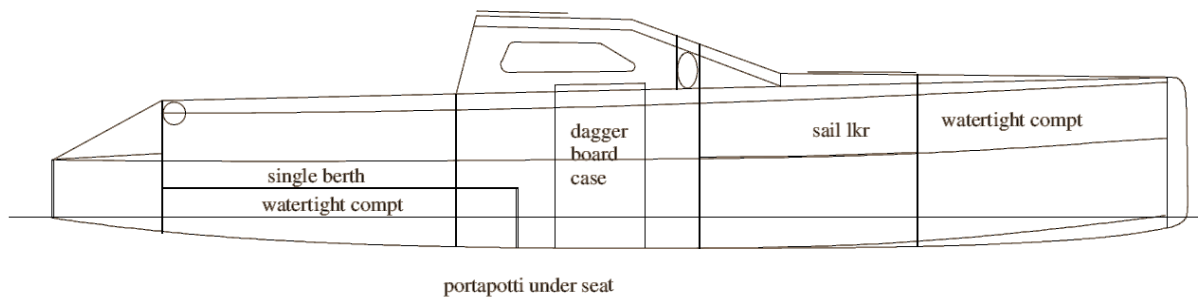
2 single berths in hulls plus boom tent headroom 1.3m (48")"

These plans are in metric units. Metric measuring tapes are available at [BoatBuilderCentral.com](http://BoatBuilderCentral.com). Do not waste time translating units, it is much easier to work in metric than in inches. One or two crew (1 trapeze)



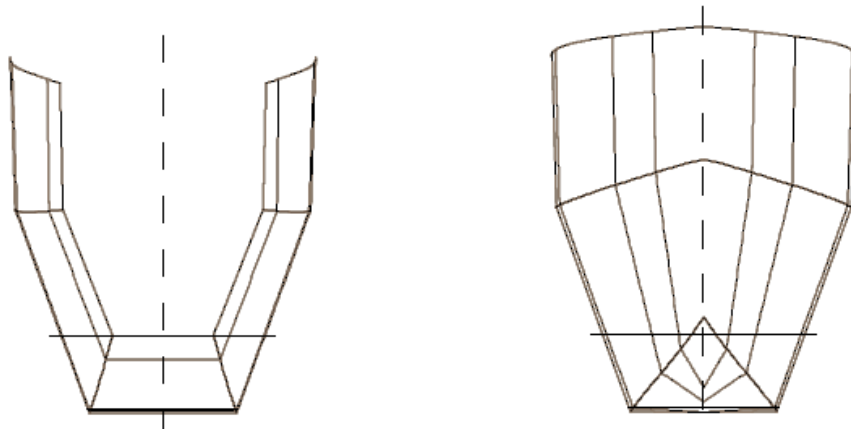
A simple, trailable, minimalist, performance cruising catamaran Large beach cat rig (plus foils, deck gear etc.) can be used instead of (racing) rig shown here. Cruising rig also available.

The Acorn is a 21ft lightweight plywood minimum fast cruiser. Some parts, e.g. boards, rudders, spars, can come from large beach cats (i.e. Hobie 18 or larger). The rig shown is the optional racing rig which is only suitable for experienced sailors in light wind areas. Smaller rigs are available, for example, a Hobie Cat 18 rig or Tornado, see the study plan



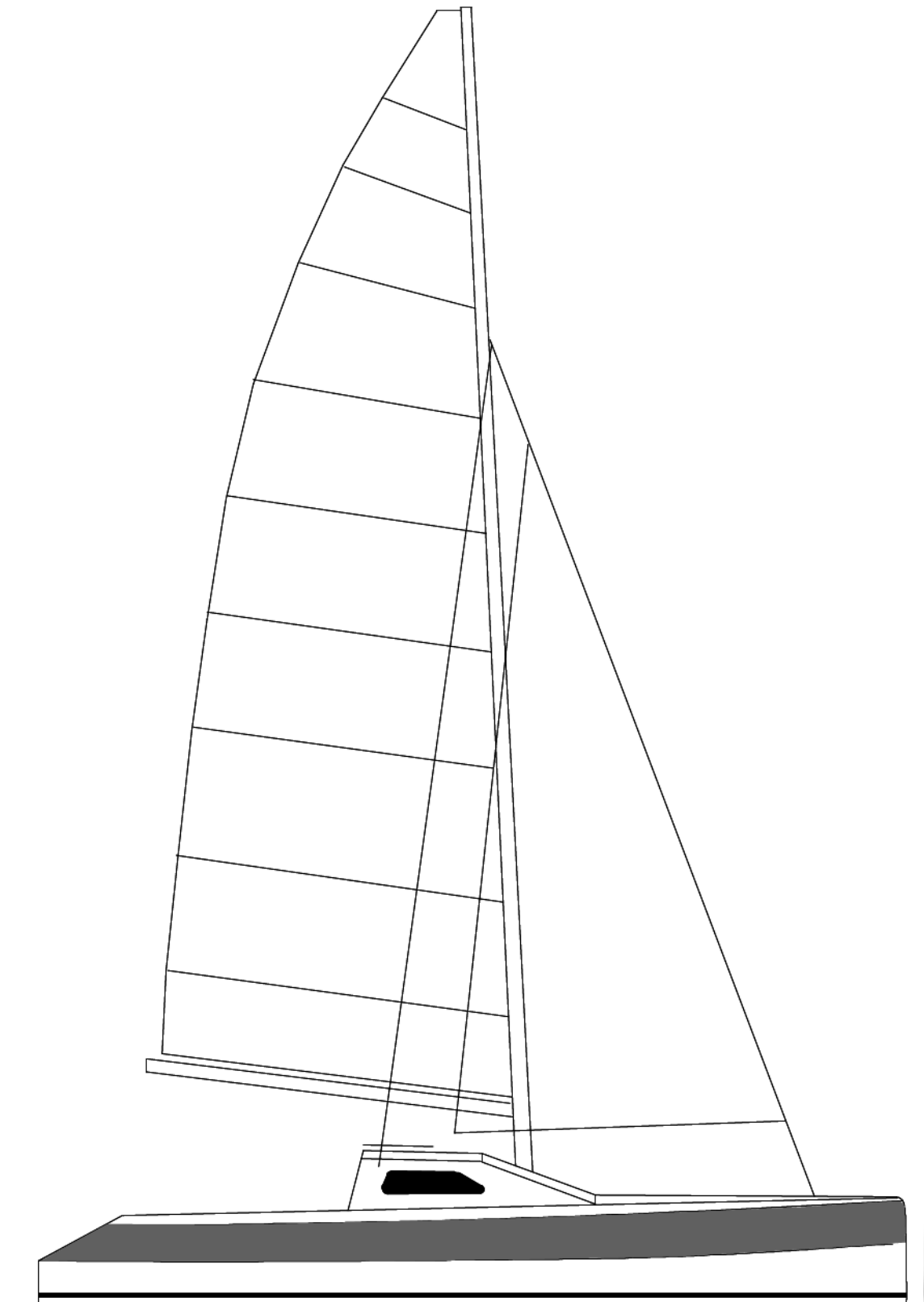
**Building Method:**

Plywood epoxy with taped seams and exterior fiberglass sheeting. Optional chine log.



The plans provide two ways to draw and cut the bulkheads:

- From the dimensions
- from full size patterns (printed DXF file).



**Acorn with modified Hobie 18 rig**

*Copyright 2016 TwoMorrow Holdings LLC*

## LABOR

The average construction time for the hull is 300 hours ready for sanding and paint.

## MORE

Visit our [forum](#), help pages, tutorial pages and read our FAQ: most questions are answered there.

## LICENSE

As with all our plans, you have the right to build one boat from those plans. The designer holds the copyright to the design and you purchase a license to build one boat. If you plan to build more than one boat, please contact us about licensing fees.

## BUILDING STANDARDS

These plans were drafted according to the ABYC rules. The ABYC (American Boat and Yacht Council) defines the boat building standards in collaboration with the USCG. Professional builders may be subject to more requirements. Consult the designer.

The ABYC standards are very close to the ISO norms and CEE requirements but no European certification was applied for since this is not required for amateur boat building in Europe. CEE/ISO certification is available to professional builders for a fee.

**BILL OF MATERIALS**

<b>Plywood (4x8' – 122x244cm)</b>		
4 mm (3/16")	11	
6 mm (1/4")	11	
<b>Fiberglass Fabric and Tape</b>		
Woven 6 oz.	45 yards	41 m
<b>Resin</b>		
Epoxy	4.5 gallons	25 kg
<b>Timber</b>		
1"x1" (20mm <sup>2</sup> )	60 feet	20 m
2"x2" (20x40mm <sup>2</sup> )	330 feet	100 m
1-1/2"x1" (30x20mm <sup>2</sup> )	70 feet	20 m
3"x1" (70x20mm <sup>2</sup> )	16 feet	5 m

This BOM covers all the supplies for this boat as designed. Usage of materials will vary in function of several factors. An experienced builder will use less resin. First time builders always use more resin, take that in account. Our resin usage calculations are based on a 50% glass content. Options, customization, and variations in fabric and foam cutting preferences will also affect the Bill of Materials. Our figures show an estimated average. Small variations in fiberglass specifications are acceptable, consult us for substitutions.

All timber to be "Joinery Quality" or better softwood. Use Douglas Fir, Yellow Cedar, Sitka Spruce or similar. Sizes given are nominal "PAR" (Planned all Round) ie 2" x 1" has a "real" size of approx 45mm x 20mm

## PLANS PACKING LIST

- Full size bulkheads: 2 DXF files
- Bulkhead dimensions
- Bulkhead framing
- Bulkheads locations
- Hull setup on jig
- Hulls planking
- Bottom panel dimensions
- Fiberglass laminations
- Forward beam assembly
- Aft beam assembly
- Aft beam box
- Forward beam box
- Daggerboard box
- Daggerboard
- Daggerboard section full size pattern
- Hull interior
- Hull decking
- Aft deck
- Bill of materials

Building notes with complete jig setup notes.

### **Plans are shipped in PDF Format**

Plans are available in metric only.