

A small 16' classic runabout.

SPECIFICATIONS

LOA	16'	4,88 m
Max Beam	5'	1,50 m
Hull weight	200-250 lbs.	90-113 kg
Designed displacement/draft	1155 lbs./5"	525 kg/12,5 cm
Immersion	308 lbs./1"	55 kg/1 cm
Recommended Engine	25 to 60 HP	15 to 40 kW
Outboard Shaft Length	20"	50 cm

** All specifications are approximate and subject to changes in function of the mood of the designer and the skills of the builder.*

CONTENTS

Specifications	1
Description	2
Builder threads on our forum	3
Building Method	3
Required Skills	3
Options	3
Bill of Materials	4
Plans Packing List	5
Reviews	Error! Bookmark not defined.
More	5

DESCRIPTION

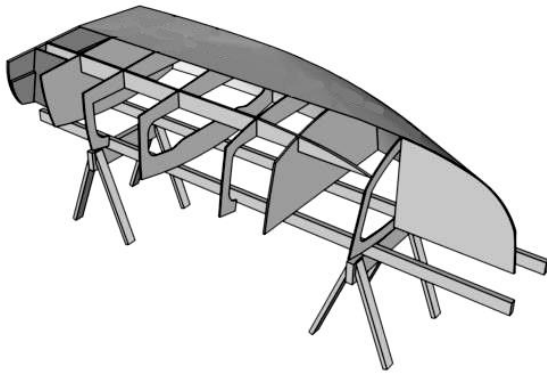
Straight from a DIY magazine from the 50's! That is where we found plans for a boat named *Victory* and redesigned her for our material and building method. Based on that concept, we designed 3 boats between 12 and 16'. The RB16 is the largest of the three. The RB16 is not a racer. She is designed to cruise around at a good speed with minimal HP. Built light and with one person on board, she will plane with a 20 HP but will feel better with a 30. It's an old-fashioned vee hull that ends up with almost no deadrise: fast but not designed for anything else than good weather. The new hull has less warp than the original, it is closer to a modern planing hull with parallel buttocks. Above the waterline, she is a small classic: strong tumblehome in the sides at the stern, typical chine fender, teak or veneer planked deck.



BUILDER THREADS ON OUR FORUM

[muratugurlu](#)

BUILDING METHOD



The RB16 is built upside down on a simple jig. The jig is made from the frames and stringers. The plans show notches in the frames and stringer for easy alignment.

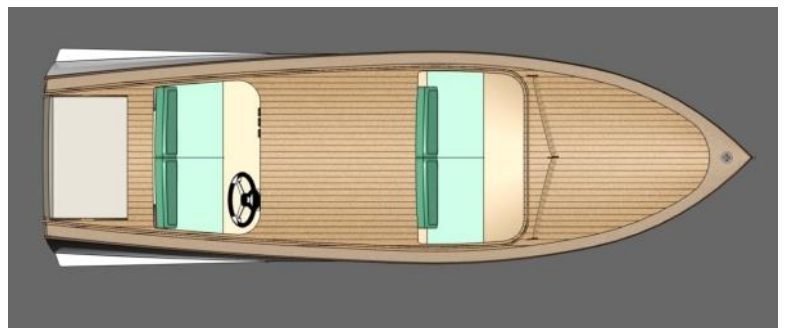
The tumblehome is produced by cutting slits in the plywood sheet. The strong camber in the deck requires kerfs or slits. The plywood deck is covered with a decorative veneer, vacuum bagged or simply glued. Hull weight will vary depending on the features and accessories. This boat can be customized as long as the builder respects frame, stringer spacing and scantlings.

REQUIRED SKILLS

The RB16 is a boat for those who enjoy building and show off their workmanship but still much easier and faster to build than a traditional wooden boat. We do not recommend it for a first-time builder.

OPTIONS

The standard version has a twin cockpit but there are as many cockpit options as builders. She can have a small single cockpit, an almost full-length open cockpit or anything in between. At the transom, the sides have a strong tumblehome. The plans and building notes show how to build the boat with or without the tumblehome if the builder prefer straight sides.



The boat is too small to be fitted with a self-bailing sole, but she can be made unsinkable with the addition of buoyancy foam.

BILL OF MATERIALS

Plywood (4x8' – 122x244cm)		
6 mm (1/4")	5	
9 mm (3/8")	4	
3/16" or 1/4" (4 or 6 mm)(deck)	4	
Also see our CNC Kit , which is a precut plywood kit that includes all the plywood needed to build the boat as designed.		
Fiberglass Fabric and Tape		
12 oz – 6": Biaxial Tape	100 yards	90 m
12 oz – 50": Biaxial Cloth	15 yards	13 m
Resin		
Epoxy	1 1/2 gallons	5.7 liters
Also see our MarinEpoxy or Silvertip Epoxy kits which include all of the epoxy and fiberglass listed.		

This BOM covers all the supplies for this boat as designed. Usage of materials will vary in function of several factors. An experienced builder will use less resin. First time builders always use more resin, take that in account. Our resin usage calculations are based on a 50% glass content. Options, customization, and variations in fabric and foam cutting preferences will also affect the Bill of Materials. Our figures show an estimated average. Small variations in fiberglass specifications are acceptable, consult us for substitutions.

PLANS PACKING LIST

Plans are available in metric or US units.

- B293_1 Plan and Profile
- B293_2 Construction
- B293_3 Plywood nesting
- B293_4 Stations
- B293_5 Plywood panels
- B293_6 Framing
- B293_7 Details

Specific building notes for this boat

MORE

Visit our [forum](#), help pages, tutorial pages and read our FAQ: most questions are answered there.

License

As with all our plans, you have the right to build one boat from those plans. The designer holds the copyright to the design, and you purchase a license to build one boat. If you plan to build more than one boat, please contact us about licensing fees.

Building Standards

These plans were drafted according to the ABYC rules. The ABYC (American Boat and Yacht Council) defines the boat building standards in collaboration with the USCG.

Professional builders may be subject to more requirements. Consult the designer.

The ABYC standards are very close to the ISO norms and CEE requirements but no European certification was applied for since this is not required for amateur boat building in Europe. CEE/ISO certification is available to professional builders for a fee.