

The designer (Evan Gathouse) started sea kayaking at the age of 16, and has paddled on several multi-week paddling expeditions. He has paddled in numerous sea kayaks and has a lot of experience of what characteristics make a good sea kayak. We have had very positive feedback about the Orca 17 and wanted to design a smaller kayak for small paddlers. The SK16 is the result.

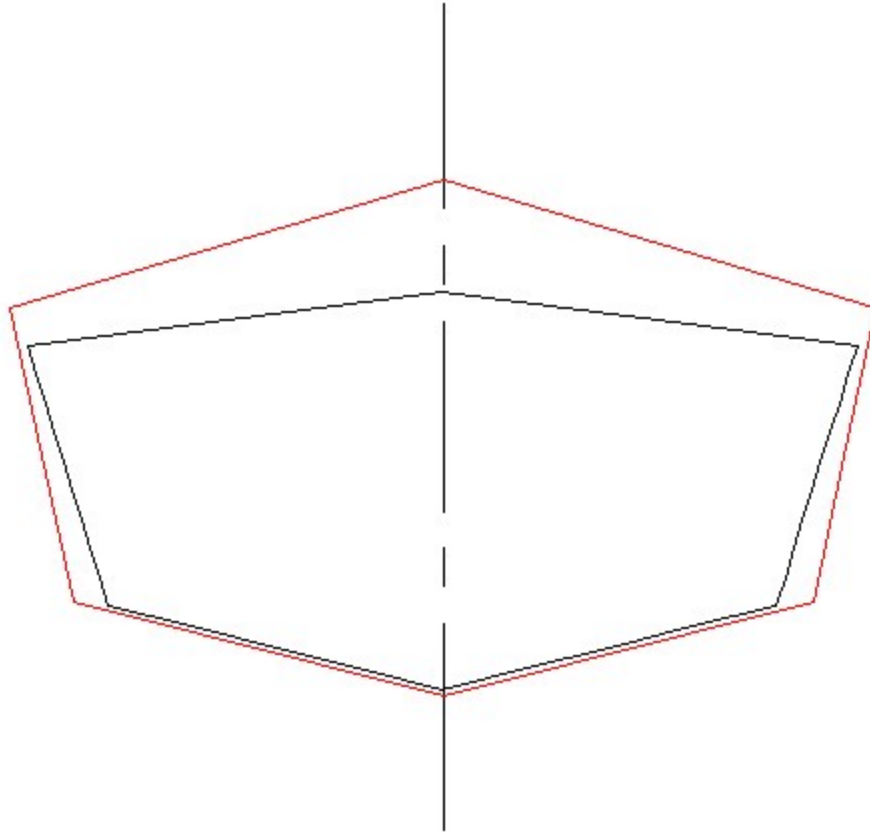
<b>Specifications:</b>		
<b>LOA:</b>	15'-7"	4.73 m
<b>Max. Beam:</b>	23"	.58 m
<b>Displacement at Designed WL:</b>	305 lbs.	138 kg
<b>Material:</b>	Stitch & Glue	



**Building method:**

While our Orca 17 sea kayak is for larger paddlers who might spend a week or two on the water, this sea kayak is for smaller paddlers in the 100 – 160 lb weight range (45 – 73 kg). It is not a simple scaling of the Orca 17 but a complete redesign. We flattened the aft deck more to keep the weight and windage down but kept the high peaked inverted V shaped foredeck that sheds waves so well. This boat will be fast and responsive and the lower windage and slightly less beam will help smaller paddlers keep up with a bigger kayak partner. It has a shallow V hull which provides good initial stability and will feel comfortable for a beginner. It will be best suited for day trips or up to week long tours.

A comparison of the middle sections: Orca 17 (red) and the 16' sea kayak (black)



Its cargo carrying capacity is less than the Orca 17, but the design waterline is set at 305 lbs. This allows up to 40 lbs for the kayak, about 160 lbs for the largest paddler and over 100 lbs of gear. For day trips or up to a week long trip you'll have ample space. If you're used to backpacking, think how much you could carry if your backpack was 100 lbs! A bottle of wine for your time ashore isn't a big weight burden either.





**Required Skills:**

While not difficult to build, we recommend the Sea Kayak 16 to builders who have completed at least one other stitch and glue project. Our Cheap Canoe is an excellent introduction to our building method and the plans are free. The Sea Kayak 16 uses thin 4mm (3/16") plywood and lighter fiberglass than larger boats. No woodworking skills or special tools are required.

**Options:**

Hull plywood 4 mm (3/16) Okoume is strongly recommended for lightest weight. This is a boat you carry and every pound counts! Outside hull fiberglass is an option listed on the plans but is also strongly recommended. There are options for a fixed skeg or a purchased rudder. Builders can add a forward storage compartment and hatch or keep the bow open to the cockpit. Plans also include details for building hatches

**Bill Of Materials:**

*(Excerpts from our BOM)*

The BOM list materials based on our standard layout and includes a 15% waste factor for resin and fiberglass. For plywood, we use standard sheets 4' x 8' (122 x 244 cm). Please read the building notes and see the plans for detailed specifications.

Not listed in the BOM table below are small battens used as a sheer clamp and other edges. Outside hull fiberglassing will require an extra 2 yards of 4 or 6 oz. fabric.

<b>Plywood 4x8' (122x244cm)</b>		
4mm	3	
<b>Fiberglass (totals)</b>		
Woven tape	50 yards	45 m

Resin		
Epoxy, total	1.5 gallons	6 liters

**Cost:**

We offer **an epoxy fiberglass kit with free shipping in the US**. Our kit cost less than the same supplies bought locally. See the main page, top left panel.

**Labor:**

The estimated construction time is 30 hours.

**More:**

Visit our message board, help pages, tutorial pages and read our FAQ: most questions are answered there.

**Plans Packing List:**

- Detailed drawings, large scale with all dimensions required to cut the sides, bottom and the deck from flat plywood sheets: no lofting, no templates required.
- Building notes including a detailed description of the assembly sequence and building tips
- A Bill Of Materials
- Help files reference list and more.

© 2016 - 2020 TwoMorrow Holdings LLC  
7485 Commercial Circle,  
Fort Pierce, Florida USA